



item number : 71592/03/85

EAN code : 5411212712752

DODO FROG

General

Dimensions l x w x h : 19.5x16.5x24.5cm

Height minimum : 24.5cm

Height maximum : 24.5cm

Dimensions shade l x w x h : -

Main material : ABS+PP

Ceiling rose material : -

Color : Green

Style : Cartoon, Modern

Shape : -

Weight : 0.3kg

Warranty : 3 years

Product specifications

Dimmable : Yes

Light direction : Around (Diffuse)

Adjustable in height : Not adjustable In Height
(Before Installation)

Directional : Yes

Cable : Yes, USB cable

Cable length : about 1 m

Sensor : Without Sensor

Control : 3 Steps Touch Dimmer

IP-Class : IP 20

Electric class : 3

Light source including ? : Yes

Lamp socket : -

Light source number : 12pcs

Power requirements : DC 5V, 500mA

(Main Power 220-240V-50Hz)

Bulb type & maximum wattage : 0.25W SMD LED

(3W in total)

For more specifications of this product please visit

www.lucide.com

DODO FROG

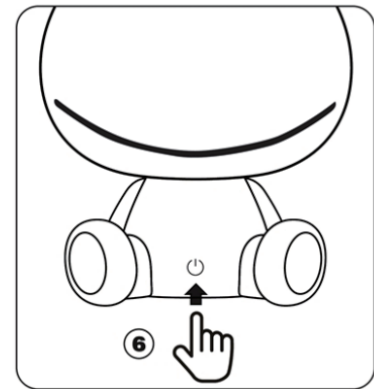
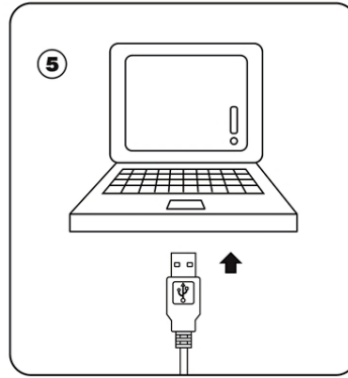
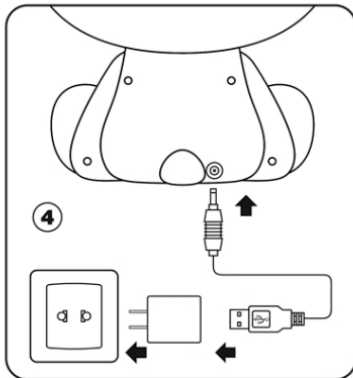
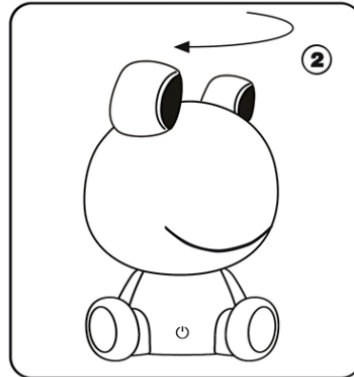
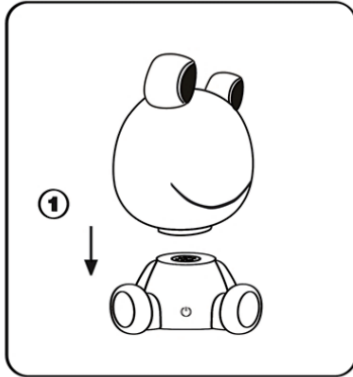
Item number : 71592/03/85

EAN code : 5411212712752



For more specifications, dimensions please visit

www.lucide.com



- Dit toestel dimt in verschillende stappen.
Telkens u het toestel aanraakt zal de lichtintensiteit veranderen.
- Cet appareil s'éclaire en plusieurs étapes.
Chaque fois qu'on le touche, l'intensité lumineuse change.
- This item is dimmable in different steps.
Each time the item is touched, the light intensity changes.
- Dieses Apparat dimmt in mehrere Malen.
Wenn Sie das Apparat berühren, soll die Lichtintensität ändern.

Dit product bevat een lichtbron van energie-efficiëntieklasse G
 Ce produit contient une source lumineuse de classe énergétique G
 This product contains a light source of energy efficiency class G
 Dieses Produkt enthält eine Lichtquelle der Energieeffizienzklasse G
 Ten produkt zawiera ród o wiat a o klasie efektywno ci energetycznej G