




• **Evaporative Air Cooler MAGI 6**





*This manual provides you with important information needed for setup, operate and maintain your **MAGI 6** evaporative cooler.*

Failure to follow these instructions may damage and / or impair its operation and void the warranty.

	CORRECT DISPOSAL OF THE PRODUCT
	<p>This marking indicates that the product should not be disposed with other household wastes throughout the EU.</p> <p>To prevent possible harm to the environment or the human health from uncontrolled waste disposal, recycle it responsibly promoting the sustainable reuse of material resources.</p> <p>To return your used device, please use the return and collection systems or contact the retailer where the product was purchased.</p>



INTRODUCTION

Thank you for purchasing the **MAGI 6 Evaporative Air Cooler**. Please read all instructions carefully before setting up and operating this unit. This manual is designed to provide you with important information needed to setup, operate, maintain and troubleshoot the cooler. Failure to follow these instructions may damage and / or impair its operation and void the warranty.

OPERATION PRINCIPLE

Evaporative coolers lower the air temperature by using the principle of water evaporation. When the water evaporates it becomes a mixture of air and water molecules. This chemical change requires heat which is taken from the water molecules, resulting in cooler air discharged from the cooler. It's the natural way of cooling, similar to a breeze blowing across a lake. This breeze lowers the temperature and creates a relaxing cooling effect.

IMPORTANT NOTES

- ▶ This cooler is not intended for use by individuals (including children) with reduced physical, sensory or mental capabilities and lack of experience or knowledge, unless they are fully instructed regarding the proper operation of the cooler and are supervised by a person responsible for their safety.
- ▶ Children should be supervised at all times to ensure that they do not play with the cooler.
- ▶ If the supply cord is damaged, it must be replaced by the manufacturer, an authorized agent or a qualified technician in order to avoid damaging the cooler.
- ▶ Ensure the supply voltage is within the rated $\pm 10V$ range, otherwise the cooler will not operate properly, may not start or may stop frequently. This kind of function will damage the cooler eventually.
- ▶ The evaporative air cooler should not be used within enclosed spaces. It must be kept level and the water tank always filled. It's recommended to have enough air exhaust in order to run the cooler. Mechanical and natural exhaust can be combined. The cooler works best when it's placed near an open window and the outside air is drawn into the cooler
- ▶ Always check the water supply to be sure there is no leakage and verify proper water level in the water tank. Do not over-fill the water tank to prevent spillover. Always use clean water to fill the cooler.
- ▶ Make sure that the cooler and power connection have proper grounding, otherwise it may cause electrical shock.
- ▶ Always disconnect the cooler from the power supply before cleaning and service.



ASSEMBLY

Please open the side panel to check the parts and the technical parameters (the manual). If the parts are incomplete or broken, do not attempt to repair or modify on your own. Contact our authorized agent, or technical department.

Filter installation

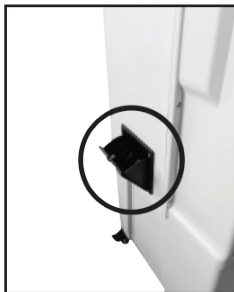
The cooler is equipped with one filter.

Remove / Insert the filter, as shown in the image below.



Adding water

In order to add water, pull out the water inlet, as shown in the image below.



Water drain

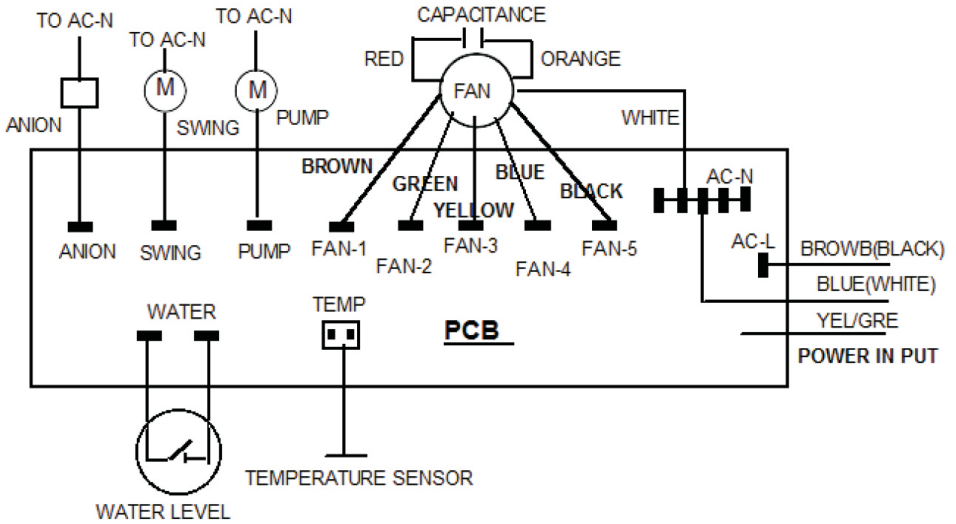
In order to drain the water, open the valve cover, as shown in the image below. Afterwards close it clockwise.



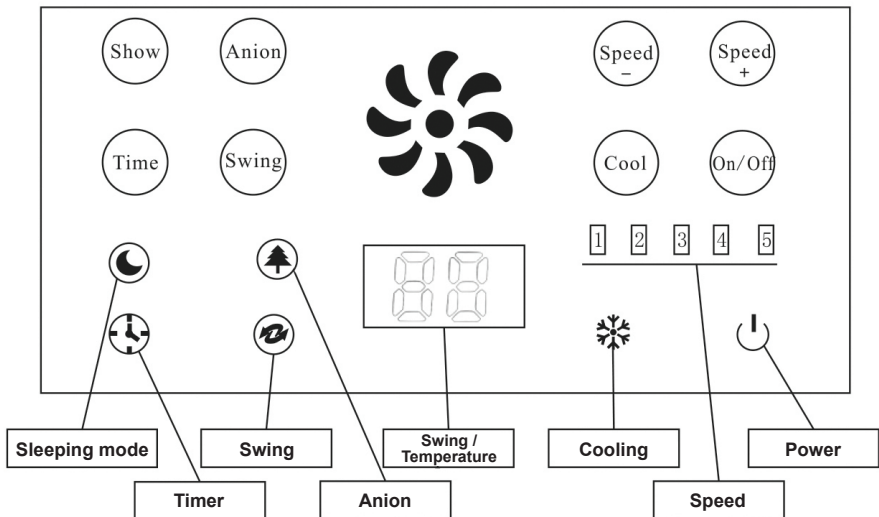
TECHNICAL DETAILS

	MAGI 6
Max airflow [m ³ /h]	5.000
Power [kW]	0,3
Voltage [V / Hz]	220 - 240V / 50 - 60 Hz
Net weight [Kg]	20
Operating weight [Kg]	60
Fan type	Centrifugal
N° of speeds	5
Outlet dimensions [mm]	280 x 610
Pad dimensions [mm]	(760 ÷ 30) x 305 x 100
N° of Pads	1
Unit dimensions (L x W x H) [mm]	475 x 350 x 1.270
Water tank [L]	40
Cover area [m ²]	35 ÷ 40

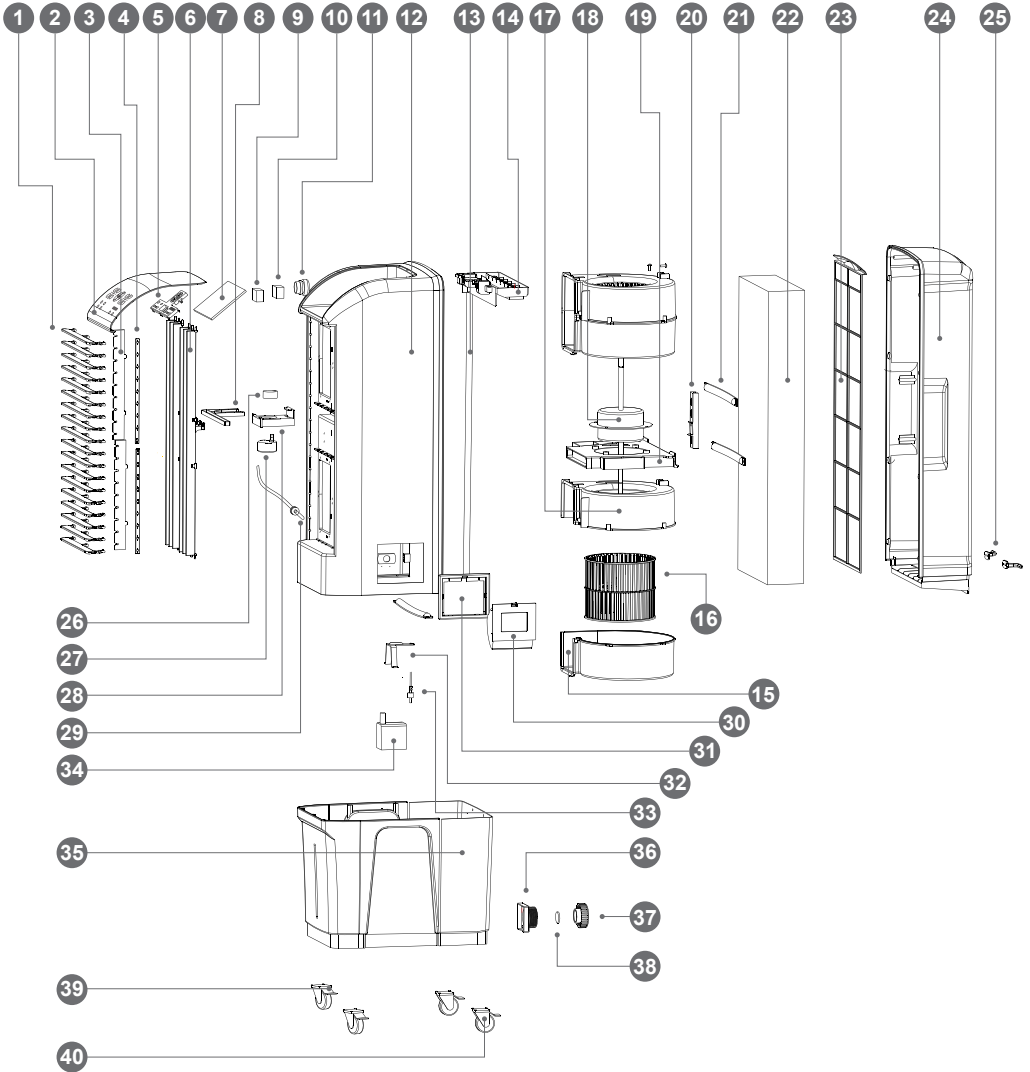
WIRING DIAGRAM



OPERATION GUIDE



UNIT DESCRIPTION





N°	Description
1	Front Louver
2	Translucent plastic electric control panel
3	Front louver connected bar
4	Front louver connected bar
5	Electronic display plastic frame
6	Back louver driven bar
7	Control board
8	Back louver driven bar
9	Capacitor
10	Negative ion generator
11	Wire lock
12	Front panel
13	Water pipe
14	Water distributor
15	Centrifugal fan lower volute
16	Centrifugal fan impeller
17	Centrifugal fan upper volute
18	Fan motor
19	Fan motor fixed base
20	Centrifugal fan volute connector
21	Pad holder
22	Cooling Pad
23	Back dust screen
24	Back panel
25	Winding hook
26	Swing cam
27	Swing motor
28	Swing fan motor fixed base
29	Power cord
30	Lid of water inlet
31	Base of water inlet
32	Pump fixed frame
33	Water level switch
34	Submersible Pump
35	Water tank
36	Drain base
37	Drain plug
38	Drain plug gasket
39	Castor with brake
40	Castor with no brake



OPERATION GUIDE - Remote Controller



	ON / OFF	Start the cooler in stand-by state or stop the cooler.
	Cool	Switch between cooling mode or ventilation mode.
	Speed +	Increase the airflow. The steps are 1 > 2 > 3 > 4 > 5 > 1.
	Speed -	Decrease the airflow.
	Swing	Start or stop the swing function.
	Timer	Start the timer function.
	Anion	Start or stop the anion function.

ON / OFF	Press this button, when the cooler is in stand-by state, to start it. The operation mode and airflow speed will be the same as before the last power off. The factory start up settings at first start up are speed 2 and cooling operating mode. The airflow indication is L > M > H, from left to right dynamically. Press this button when the cooler is operating, to stop it. In stand-by state only the time indication will appear on screen.
Speed selection	Press the SPEED+ and SPEED- buttons to increase or decrease the air speed. The airspeed steps are 1 > 2 > 3 > 4 > 5 > 1 and they will appear on screen at the "speed" indication
Operating mode	Press the COOL button to select the operating mode between cooling and ventilation. When the cooler is operating and you switch from ventilation to cooling mode, the cooler will automatically run for 30s at the lowest speed and then resume with the last user selected speed. This will not affect the speed indication on the screen.
Swing function	Press the SWING button to start or stop the swing function. When activated, the swing indication will be illuminated on the cooler screen.
Anion function	Press the ANION button to start or stop the ionizer function. When activated, the anion indication will be illuminated on the cooler screen.
Timer function	Press the TIMER button to start or stop the cooler automatically after the user selected hours. The timer function will start the unit automatically while it's in stand-by state and it will stop the unit while it's in operating mode. When you press the TIMER button the "Timer" indication will flicker and you can adjust the time by pressing the SPEED buttons. The maximum selected time is 9 hours.





➔ Timer function	<p>During setup the indication “H x” (the “x” is the user selected time) will appear on screen. The temperature indication will appear again after the setup is completed.</p> <p>The timer will start automatically 5 seconds after the setup is completed. The “Timer” indication will stop flickering and remain on screen.</p> <p>In order to cancel the timer function :</p> <ul style="list-style-type: none"> ▶ Set the time to 00. ▶ Press ON / OFF button during timer setup, when the “Timer” indication is flickering. ▶ Press ON / OFF button after the timer setup is completed.
-------------------------	--

MAINTENANCE

- ▶ Turn off the cooler and disconnect it from the power supply before performing any cleaning operation.
- ▶ Use a soft cloth and mild cleaner to clean the cooler.
- ▶ Remove the pad and clean it from dust using a soft brush.
- ▶ It is recommended to clean the filter and cooling pad once per 2 weeks to ensure the cooler's maximum efficiency.
- ▶ It is recommended to drain the water every day and clean the water tank to ensure that the water in the tank is always clean and therefore the supplied air always fresh.
- ▶ If you don't intend to use the cooler for an extended period of time, disconnect the power supply and drain the water.

TROUBLESHOOTING

Warning :

In case of malfunction do not attempt to repair the cooler yourself. Always contact a qualified technician.

Problem	Possible reasons	Solution
The cooler does not work	<ul style="list-style-type: none"> ● Faulty electrical connection. ● Faulty controller. ● Burned fuse. ● Faulty main board. 	<ul style="list-style-type: none"> ● Check the electrical circuits and wiring. ● Contact an authorized technician. ● Contact an authorized technician. ● Contact an authorized technician.
No cooling	<ul style="list-style-type: none"> ● Faulty pump. ● No water / not enough water. ● Faulty controller. ● Faulty main board. 	<ul style="list-style-type: none"> ● Contact an authorized technician. ● Fill the water tank with clean water. ● Contact an authorized technician. ● Contact an authorized technician.
No airflow	<ul style="list-style-type: none"> ● Faulty controller. ● Faulty motor. 	<ul style="list-style-type: none"> ● Contact an authorized technician. ● Contact an authorized technician.
Unpleasant odour	<ul style="list-style-type: none"> ● Dirty water. ● Dirty cooling pad. ● Dirty air filter. 	<ul style="list-style-type: none"> ● Drain the water and refill the tank with clean water. ● Remove and clean the cooling pad. ● Remove and clean the filter.



ISO 9001:2015

ISO 14001:2015

ISO 45001:2018

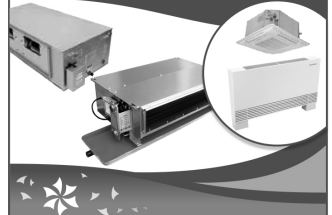
AIR HANDLING UNITS



HEAT EXCHANGERS



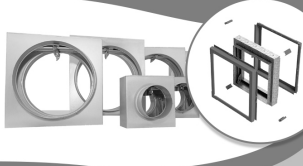
FAN COIL UNITS



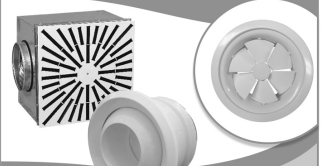
FANS & FAN SECTIONS



FIRE DAMPERS



AIR OUTLETS



STEAM HUMIDIFIERS - DEHUMIDIFIERS



CENTRAL VACUUM SYSTEMS

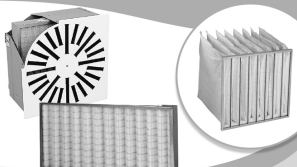


TUBO
THINK CLEAN

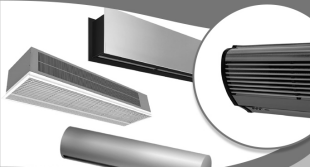
STAINLESS STEEL CHIMNEYS



AIR FILTERS



AIR CURTAINS



EVAPORATIVE COOLING



Main Office ATHENS

📍 Paparrigopoulou 10 & Lagada,
12132, Peristeri, Athens
211 - 705.55.00

✉ sales@airtechnic.gr

Factory - THIVA

📍 4th km Thiva - Chalkida Hwy,
32200, Thiva
22620 - 89.006

✉ factory@airtechnic.gr

Factory - THESSALONIKI

📍 End of Meandrou Str.,
57013, Oraiakastro, Thessaloniki
2311 - 82.40.00

✉ thessaloniki@airtechnic.gr