

# Technical data sheet

## Pressure ISO clip 3050, single, light grey

Item no. 2101017



With adhesive base, slot and for screwing to M6 thread.  
Use the Impu-Fix ribbon conductor quick adhesive, type 509, to stick the polystyrene clips to masonry and concrete.



**PS** Polystyrene

### Master data

Item no.	2101017
Type	3050 LGR
Description 1	Pressure ISO clip
Dimension	6-16mm
Colour	Light grey
RAL number	7035
Material	Polystyrene
Material symbol	PS
Smallest sales unit (VG)	100,00 Piece
Weight	0,40 kg/100 pc.

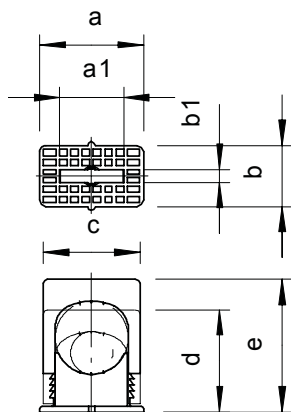
# Technical data sheet

Pressure ISO clip 3050, single, light grey

Item no. 2101017



## Technical data



Dimension a	28,00 mm
Dimension a1	13,00 mm
Dimension b	18,00 mm
Dimension b1	4,00 mm
Dimension c	22,50 mm
Dimension d	25,00 mm
Dimension e	34,00 mm
Expandable	<input type="checkbox"/>
Number of cables/pipes	1,00
Version	Closed
Fastening type	Screw hole
Halogen-free	<input checked="" type="checkbox"/>
Impact-resistant	<input checked="" type="checkbox"/>
Snap system	<input checked="" type="checkbox"/>
Clamping range D	6,00 - 16,00 mm